



Richland Street Items

No Left Turn

September 18, 2023, 2023

Petition: Rosie Fayard, on behalf of Learning First Charter Public School, request installation of No Left Turn 2 – 3 pm on School Days signage at the intersection of Ward St., Richland St and Dorchester St.

9j CC June 6, 2023

Scheduled Committee Hearing: September 20, 2023 Traffic & Parking Committee, Item 8b

Prepared by: Todd M. Kirrane., Assistant Director

The petitioners have requested the installation of a posted NO LEFT TURN 2PM – 3PM SCHOOL DAYS ONLY signs on Richland Street its intersection with Ward Street and on Dorchester Street at its intersection with Ward Street.

Richland Street is classified by the Massachusetts Department of Transportation (MassDOT) as a Local roadway under City Jurisdiction. The roadway is approximately 22 feet curb to curb, generally runs in an east to west direction between Vernon Street and Ward Street. Richland Street is one way and provides one general purpose motor vehicle travel lane and on-street parking on both sides of the street. On Street parking was altered by recent ordinance changes made at the request of the Learning First Charter Public School, located at 50 Richland Street. Currently on-street parking along the even side is unrestricted from Vernon Street to the school property (approximately 270 feet). From the School property to Ward Street is posted NO PARKING 7AM TO 6PM SCHOOL DAYS ONLY and unrestricted during non-school days (approximately 470 feet). On-street parking on the odd side of the street is posted RESIDENT PARKING ONLY from Vernon Street to the rear of 26 Dorchester Street (approximately 280 feet), NO PARKING 7AM TO 6PM SCHOOL DAYS ONLY (approximately 140 feet including a new curb extension and crosswalk), RESIDENT PARKING ONLY & DISABLED PARKING in front of 49 Richland and the rear of 8 Dorchester (approximately 80 feet), and then NO PARKING 7AM TO 6PM SCHOOL DAYS ONLY (approximately 190 feet). The statutory (unposted) speed limit is 30 mph except during school hours when it is a posted 20 mph zone. Land use along this street is primarily residential along with the school. There are sidewalks along both sides of the street.

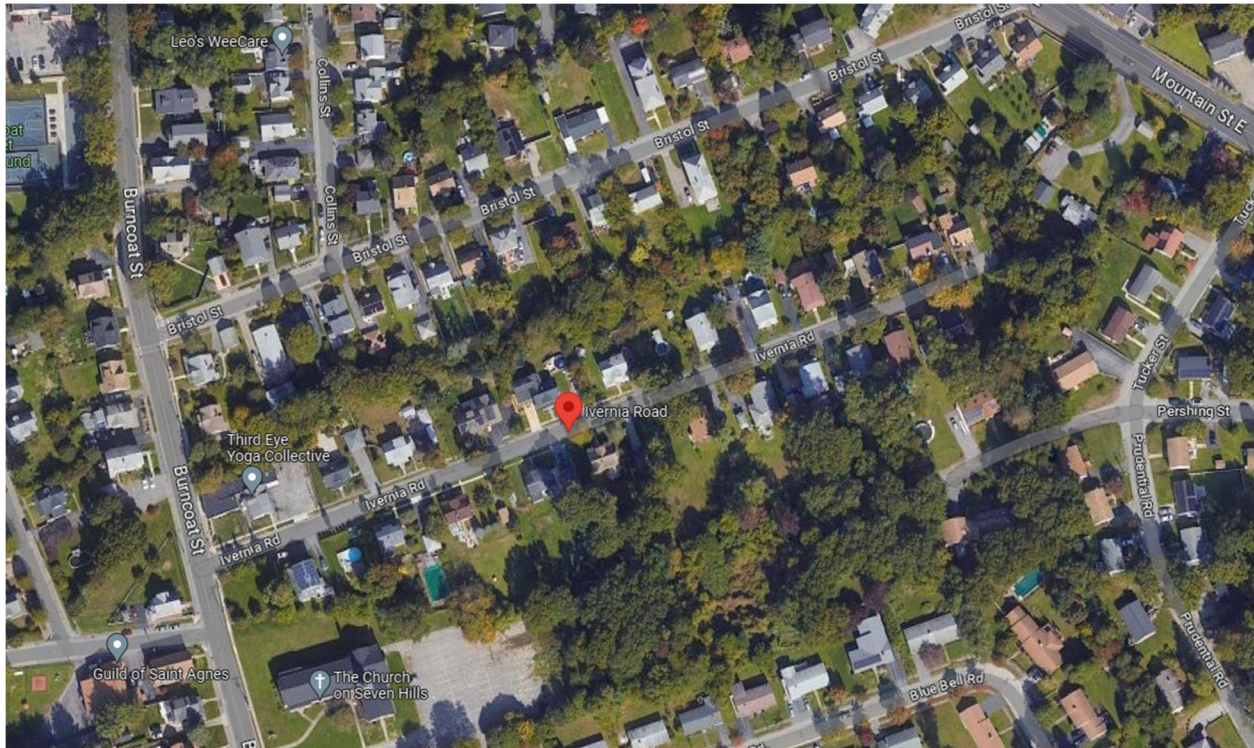


IMAGE 1: AERIAL VIEW OF STUDY AREA

OBSERVATIONS

DTM staff recently observed the school operations in order to better understand how the roadway is operating during the dismissal period. The school divides the afternoon dismissal into two parts. Those students who are being picked up by parents or guardians are picked up in the parking lot of 36 Ward Street under staff observation. Those departing via school bus are dismissed on Richland Street where 5 large school buses queue along the curb opposite the school. School staff walk younger children to their assigned bus and afterward older students are released and board their respective buses. Staff observed that when vehicles are parked in the RESIDENT PARKING ONLY zones, there is not enough room for the buses to pull all the way to the curb and out of the single lane of traffic. Because of this, the buses both pull on top of and block the mid-block crosswalk, block the travel lane, and block residential driveways. DTM staff observed vehicles that were trying to travel down Richland Street reverse back to Vernon or make an illegal u-turn and then drive the wrong way up the street back to Vernon Street. Both dangerous movements, especially when you consider the residential and school aspects of the street. The entire dismissal took approximately 30 minutes.

As touched upon above, the school operates the dismissal activity for students being picked up via automobile by parents or guardians in the parking lot of 36 Ward Street. For safety purposes it is understandable that they would want to limit the through traffic traveling through this area and limit the number of motor vehicle interactions between school age pedestrians and motor vehicles in the designated crosswalks. Imposing the requested turn restrictions will improve safety of the dismissal activities without major negative impacts to the abutting properties given that it is for only one (1) hour per day.

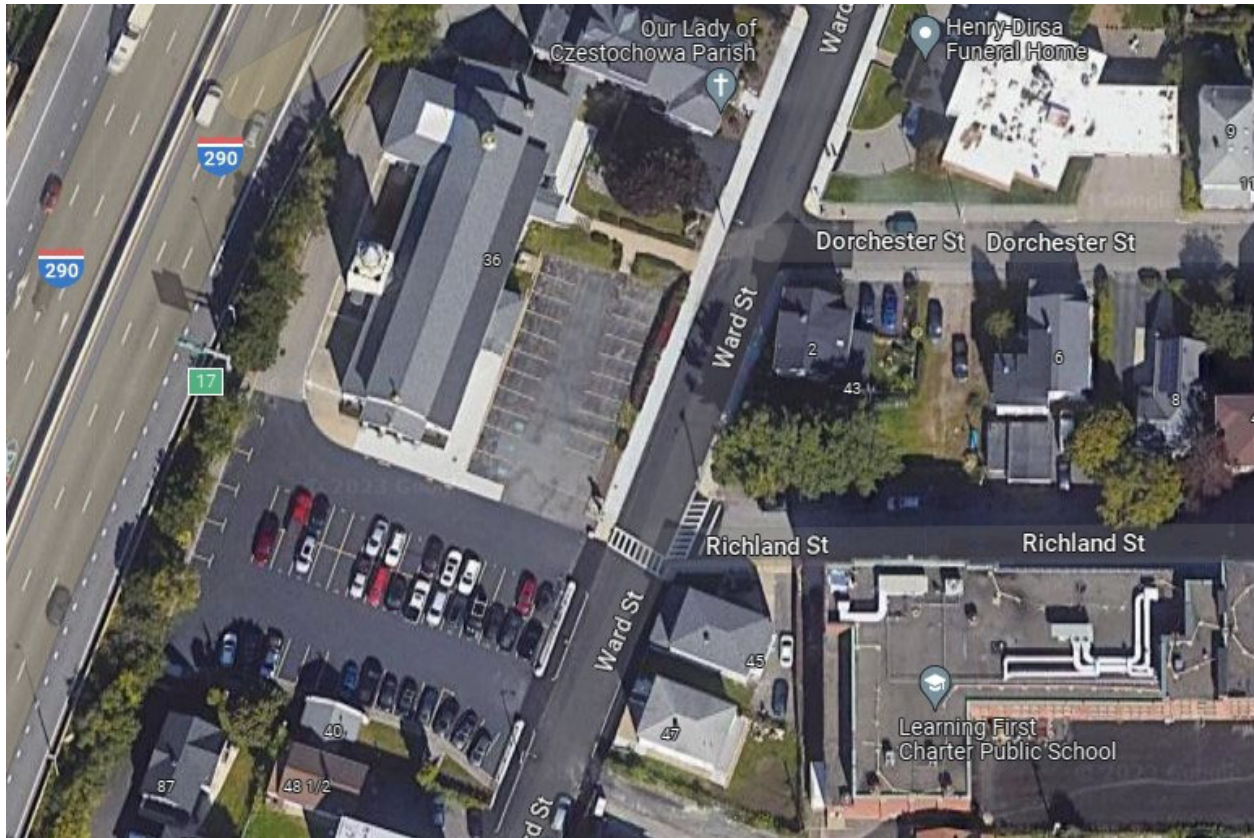


IMAGE 2: AERIAL VIEW OF PARENT/GUARDIAN PICKUP

Recommendation: Based on observations staff recommends the following:

- Vote to approve a NO LEFT TURN 2pm to 3pm School Days Only restriction on Richland Street at its intersection with Ward Street
- Vote to approve a NO LEFT TURN 2pm to 3pm School Days Only restriction on Dorchester Street at its intersection with Ward Street